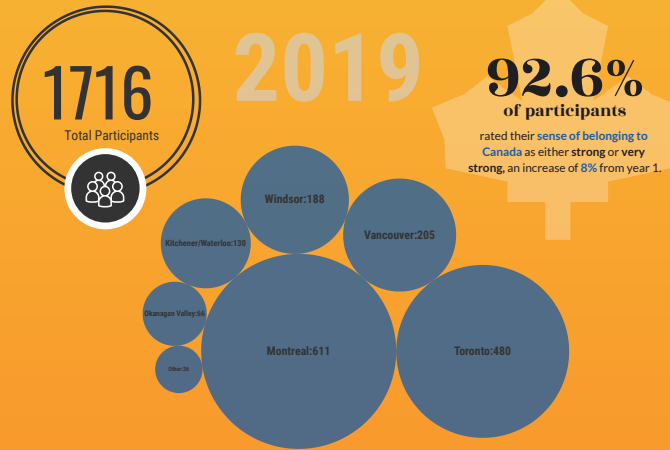


SyRIA.lth

Syrian Refugee Integration & Long-Term Health Outcomes in Canada



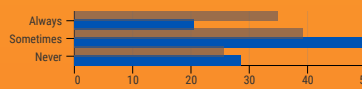
LANGUAGE

Compared to when you first arrived in Canada, do you feel you're better able to use English/French?



● A little ● Very Much ● Not at all

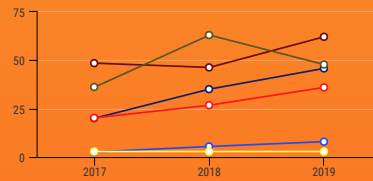
"How often do you need assistance with interpretation?"



● 2017 ● 2019

EMPLOYMENT

Employment by Gender & Sponsorship Type



◇ GAR-M ◇ GAR-W ◇ PSR-M ◇ PSR-W
◇ BVOR-M ◇ BVOR-W

GAR = Government Assisted Refugee
PSR = Privately Sponsored Refugee
BVOR = Blended Visa-Office Referred

Compared to when you first arrived in Canada, do you feel you have better knowledge, skills and connections to gain employment?



● Not at all ● A little ● Very Much

HEALTH



However, 22% of all participants stated that at some point this year they needed health care, but did not receive it. Reasons ranged from wait time and cost, for dental and chronic physical health issues among others, which are similar to the concerns we see in other communities.

In 2019

More support is desired for connections to employment though overall, participants resettled from Syria in 2015-2017 are seeing steady improvement in language and employment while also reporting good health and a strong sense of belonging to Canada.